

# Water samplers:

## PVC-standard water samplers:

Non-metallic, free-flushing water sampler recommended for general purpose water sampling. These samplers can be individually or serially attached on a hydrocable and activated by a messenger, or placed on a "Rosette System" and activated by remote command (mounting blocks for "Rosette Systems" of other manufacturers are available by request; no extra charge).

The **PVC-standard water sampler** is made of gray PVC (RAL 7011), spring closure made of latex tubing, clamp bolts for the attachment on a cable and mounting blocks for "Rosette System" attachment. Delivery is made with lanyards for loading on both, cable and "Rosette System".

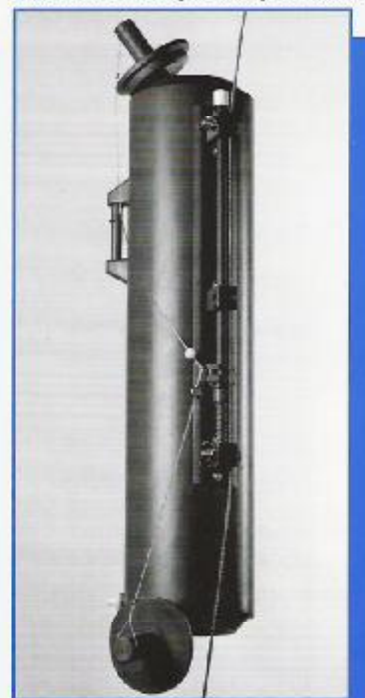
All metall parts are made out of **special VA4-stainless steel**. Delrin drain valve and Buna O-rings avoid leaking of the sampler.

The **PVC-standard water sampler** can be delivered from **1.7l to 30.0l**. Mounting of 1.7l - 12.0l samplers is made by clamps, ready to accept cable of up to 1/4" (6.4 mm). On 20.0l and 30.0l samplers, the clamps accept cable diameter up to 5/16" (8.0 mm). Also, all samplers can be mounted on "Rosette Systems".

110 - 30.0 liter



110 - 30.0 liter (loaded) on wire



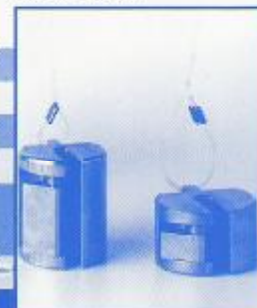
110 - 5.0 liter (loaded) on wire



110 - 2.5 liter (loaded) on wire



Messenger 80 oz and custom made sizes



DISTRIBUTED BY:



**OSIL**  
Environmental Instruments  
and Systems

Culkin House,  
C8 Endeavour Business Park,  
Penner Road, Havant,  
Hampshire PO9 1QN

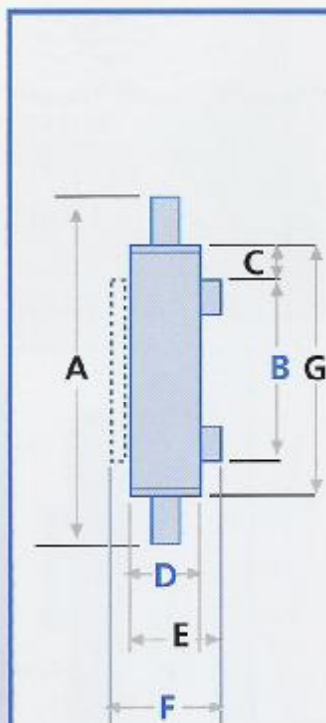
T: +44 (0)2392 488240  
E: [osil@osil.co.uk](mailto:osil@osil.co.uk)  
W: [www.osil.co.uk](http://www.osil.co.uk)



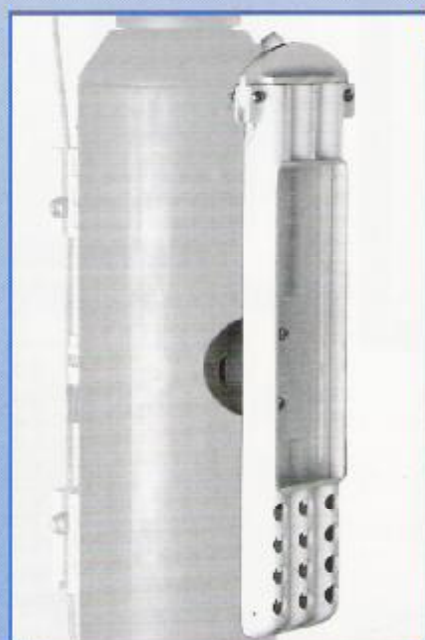


## Main Dimensions

		SAMPLER CAPACITY(liters)							
		1,7	2,5	5	8	10	12	20	30
<b>A</b>	inch	25.0	33.0	27.2	35.0	41.0	46	35.0	46.0
	mm	633	8	692	889	1041	1168	889	1168
<b>B</b>	inch	13	13	13	13	13	13	13	13
	mm	330	330	330	330	330	330	330	330
<b>C</b>	inch	2.5	2.5	3.5	3.5	3.5	3.5	3.5	3.5
	mm	63	63	63	63	63	63	63	63
<b>D</b>	inch	3.5	3.5	5.6	5.6	5.6	5.6	8.6	8.6
	mm	89.0	89.0	142.0	142.0	142.0	142.0	218.0	218.0
<b>E</b>	inch	5.5	5.5	7.6	7.6	7.6	7.6	10.7	10.7
	mm	139	139	192	192	192	192	273	273
<b>F</b>	inch	8.0	8.0	10.1	10.1	10.1	10.1	13.3	13.3
	mm	204	204	257	257	257	257	338	338
<b>G</b>	inch	18.0	26.0	20.0	28.0	34.0	39.0	24.3	37.0
	mm	457	660	508	711	863	990	711	990
<b>EMPTY WEIGHT</b>	lb	5.5	6.5	8.0	10.0	12.5	13.5	25.0	28.0
	kg	2.5	3.0	3.6	4.5	5.7	6.1	11.4	12.7
<b>FULL WEIGHT</b>	lb	9.2	12.1	19.0	27.6	34.5	39.9	69.0	94.1
	kg	4.20	5.50	8.63	12.54	15.68	18.13	31.35	42.71
<b>END OPENING</b>	inch	2.9						5.0	
	mm	74						127	



## Reversing thermometer assembly model 112 RTA



A non-metallic, high impact ABS plastic thermometer rack is attached to a pivotal PVC mounting block.

The mounting block is permanently fixed on the sampler body. The rack which can hold three (3) reversing thermometers is easily removable and interchangeable. Sampler capacity must be specified for the intended reversing assembly. Thermometer reversing assembly which can hold up to three (3) reversing thermometer and can be factory installed on new orders or easily added on existing samplers.

112 RTA on 5.0 liter sampler

